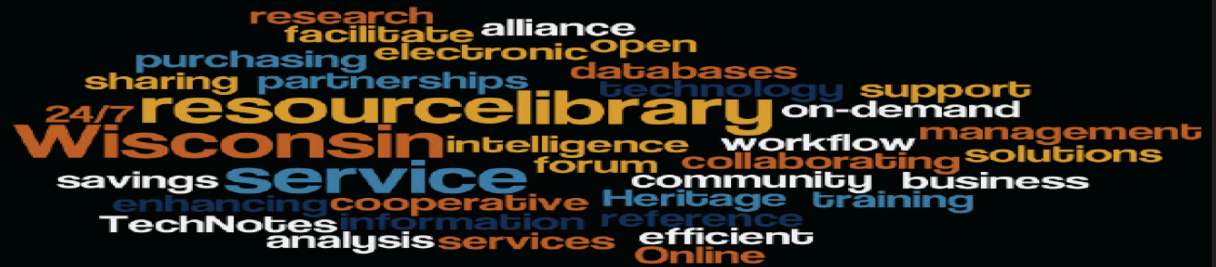


Annual Report

WiLS 2009-2010



Contents



- [Year at a Glance](#)
- [Highlights](#)
- [WiLS' Partnerships](#)
- [Projects 2009-2010](#)
- [Operation Financials](#)
- [Member Demographics](#)
- [Member Response](#)
- [Events, Outreach, Site Visits](#)
- [WiLS Leadership](#)
- [WiLS Organization](#)

Year at a Glance



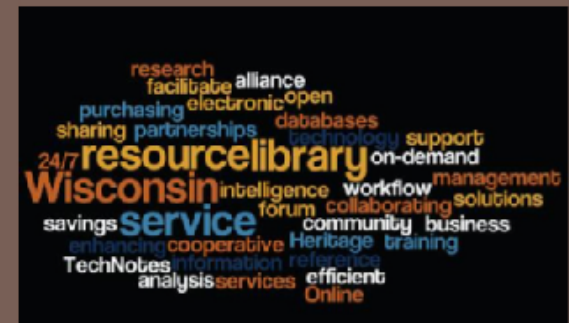
"The enterprise that does not innovate ages and declines. And in a period of rapid change such as the present, the decline will be fast."

– Peter Drucker

With the advice and support of our member libraries, WiLS moved in bold new directions, while remaining focused on our core mission to help libraries adapt to the changing nature of information technology. We built a broad range of support, research and consulting services; "WiLS as an extension of your staff" became our new mantra. We also initiated a Community Manager program - visiting libraries across the state to share information, listen to library needs and offer assistance. We truly appreciate these meetings to understand individual libraries, and to generate ideas that will further cultivate our transformation.



Wisconsin Library Services



- www.wils.wisc.edu - 608.263.2773

Watch the WiLS promotional video for a review of services and memberships.

Highlights of 2009-2010



Interlibrary Loan and Reference

WiLS Borrowing Service

WiLS began this new service as many staff retire around the country. In an effort to help libraries maintain their ILL borrowing services at a reduced cost, we work remotely to fill requests, to work with patrons on problems, and to decrease request turn around time.

ILL Training

This was a banner year for training support that we provided to ILL staff in public, academic, and special libraries around the state. Every month saw our staff traveling to libraries to help analyze workflows of ILL departments, making recommendations for change, and helping the staff implement changes to improve their departments.

ILLiad Database Archiving

This year many of the ILLiad software users made use of a new service to help provide a database backup service for their ILL data. This service came about because the parent company of ILLiad has been unable to provide this necessary service to its users.

1st Ever Joint WiLS and RL&LL ILL conference

In an effort to bring two separate conferences in the fall together for discussions on ILL topics, WiLS and Resources for Libraries and Lifelong Learning joined efforts to provide a single ILL conference.

New ILL Staff

Angela Milock joined the WiLS ILL staff during the year. As an intern to WiLS ILL in the year past, Angela was a welcome addition because of her endless energy and drive to improve our member's service options.

<u>WiLS ILL Statistics</u>	<u>FY 09/10</u>	<u>FY08/09</u>
Interloan Requests handled:	120,102	128,042
Members:	7,133	27,105
RL&LL:	9,839	10,765
Minitex:	2,714	2,917
As UW Madison Lender	100,416	87,255
Interloan Requests Filled:	83,292	90,085
Member Fill Rate:	80%	79%
RL&LL Fill Rate:	88%	86%
Mintex Fill Rate:	88%	88%
As UW Madison Lender	61%	65%

Highlights of 2009-2010

Member Accounts

Libraries have long valued WiLS as a trusted partner to handle financial transactions with vendors.

Through a contract with OCLC, WiLS acts as the billing agent for about 125 libraries, handing their access fees, cataloging and inter-library loan subscriptions, and related charges, as well as miscellaneous charges for products like WebDewey and paper documentation. Last year, we monitored \$2,627,792 in OCLC payments. These ranged from applying a \$0.25 holdings deletion credit to processing the \$66,000 bill for the state-wide AskAway contract.

In the cooperative purchasing service, WiLS not only handles payments, we even negotiate with the vendors on behalf of libraries to get the best price for the most desirable electronic databases. This service is available with any WiLS membership, but it is the main focus of our 280 Level 3 libraries. Overall expenditures topped \$5,822,000 in fiscal year 2009!

Cooperative Purchasing

A huge change for Cooperative Purchasing was the upcoming retirement of Cheryl Bradley. Cheryl started the WiLS Cooperative Purchasing Program more than twenty years ago and played a huge role in taking it to the place it is today.

With Cheryl's impending departure, Kirsten Houtman began working with academic libraries for the Coop Program, She joins Sara Gold, who works with public and k12 libraries.

During the year the following vendors and databases were added to the program: Bridgeman Education, Cambridge, Consumer Reports, The Chronicle of Higher Education, Curriculum Video on Demand, EasyBib, EBL (Ebook Library), Films on Demand, Hoover's (Dunn & Bradstreet), NBC Learn, Ship Index, Sociometrics, Springer and SRDS, and Tumblebooks. We continue to welcome new vendors.

Benefits of Cooperative Purchasing:

Access to over 3500 databases with average savings of 15-20% on subscriptions for members

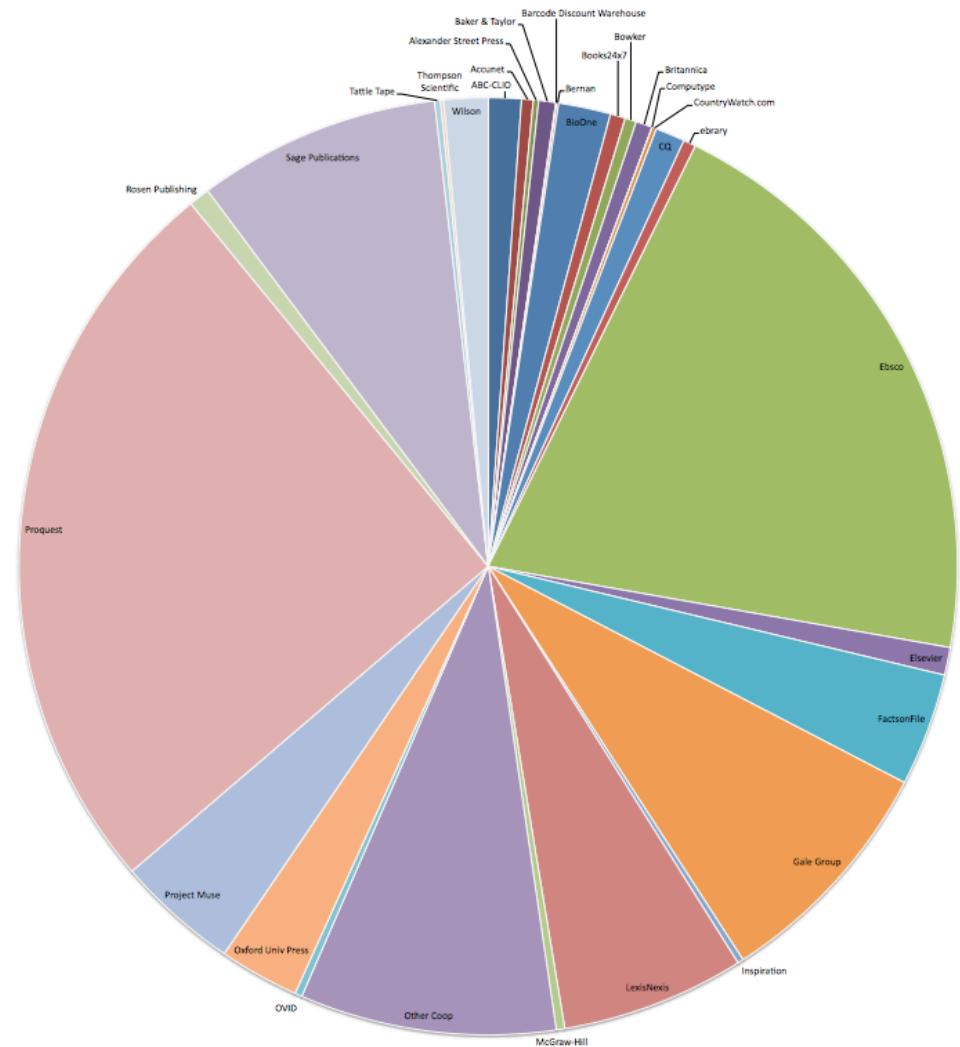
Group purchasing power with no fuss...WiLS negotiates with vendors on behalf of member libraries to buy more for less

Participate in a database subscription management service offering customized database trials and group subscription opportunities with no hidden fees

Cooperative Purchasing Activities

Proquest	\$1,475,945
Ebsco	\$1,193,319
Other Coop	\$ 513,690
Sage Publications	\$ 487,220
Gale Group	\$ 478,642
LexisNexis	\$ 368,480
Project Muse	\$ 245,213
FactsonFile	\$ 227,195
Oxford Univ Press	\$ 160,498
BioOne	\$ 104,629
Wilson	\$ 88,715
ABC-CLIO	\$ 66,267
CQ	\$ 59,013
Elsevier	\$ 55,482
Rosen Publishing	\$ 42,238
Baker & Taylor	\$ 34,090
Britannica	\$ 33,059
Books24x7	\$ 30,333
ebrary	\$ 25,251
Accunet	\$ 23,333
Bowker	\$ 22,775
McGraw-Hill	\$ 16,844
OVID	\$ 14,596
Tattle Tape	\$ 11,853
Inspiration	\$ 11,709
Alexander Street	\$ 10,475
CountryWatch.com	\$ 8,720
Thompson Scientific	\$ 5,987
Bernan	\$ 4,095
Barcode Discount Warehouse	\$ 1,652
Computype	\$ 357

Total Vendor Purchases **\$5,821,676.26**



WiLS' Partnerships

OCLC

Under agreement, WiLS is responsible for OCLC billing, order assistance and training related to WorldCat Resource Sharing. See other parts of this report for details about these responsibilities.

Wisconsin Public Library Consortium

In May 2010, WiLS took over the project management of the Wisconsin Public Library Consortium (WPLC). Primarily this consists of overseeing the shared collection of audio and ebooks, by monitoring communications (lists, [website](#)), patron support, and coordinating collection development.

Wisconsin Heritage Online

While continuing the work funded through the Nicholas Family Foundation, the key topic for the year was the future of this project. The WHO Board discussed a number of options coming to the conclusion that the project could not be sustained through member fees and the subsidy from WiLS will cease when the Foundation funding ends. Initially it was thought that WHO could be transitioned to the Reference and Loan Library with the help of LSTA funding. That proposal failed to gain the support of the LSTA Advisory Committee and as the year drew to a close, the search for an organizational home for WHO continued.



WISCONSIN
Heritage
ONLINE

Projects 2009-2010

Level 1 Community Manager Program Projects as a result of site visits:

Custom Research/Tech Notes
Learning Commons research
All Atwitter Tech Note

Technical Services Workflow Studies

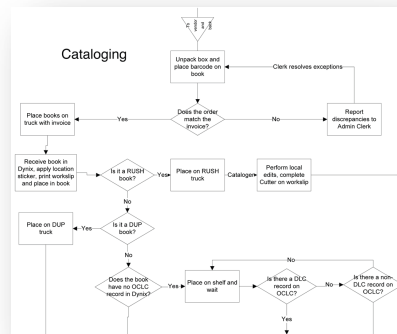
- * Carroll University
- * Manitowoc Public Library
- * UW-Oshkosh
- * Rhinelander District Library
- * Nicolet College
- * Fond du Lac Public Library
- * UW-Green Bay
- * Viterbo niversity
- * Milwaukee Institute of Art and Design

Website Assistance

Eastern Shores public libraries
Wisconsin Valley public libraries

Collection Maintenance

Weeding at Kohler Public Library (pilot)



Workflow of Cataloging

ILL Workflow/Process Reviews

UW-Milwaukee
Beloit College
Carthage College
Kenosha Public Library
UW-Oshkosh

ILLiad Support & Training

UW Colleges
Viterbo University
UW-Platteville
UW-Oshkosh
UW-La Crosse

ILL Borrowing agent

UW Colleges (pilot)

Enhanced Cooperative Purchasing

South Central Library System (pilot)

Database Statistics

CUWL Shared Electronic Collection



Designs for Eastern Shores Public Libraries

Operation Financials



	FY 2009-2010	FY 2008- 2009
Income		
Membership Fees	\$ 220,490	\$ 141,629
Contracts & Projects	\$ 600,228	\$ 273,036
Interest	\$ 68,730	\$ 82,166
Services		
WiLS ILL Related	\$ 688,015	\$ 735,415
OCLC Related	\$ 2,627,792	\$ 3,071,101
Cooperative Purchasing	\$ 6,213,316	\$ 6,512,272
Discount and Credits	\$ (26,413)	\$ (33,488)
GRAND TOTAL	\$ 10,392,158	\$ 10,782,131
EXPENSE		
Personnel	\$ 1,289,363	\$ 1,337,805
Supplies & Services	\$ 254,856	\$ 300,910
Furniture & Equipment	\$ 9,060	\$ 17,741
Travel*	\$ 30,800	\$ 32,419
Project Development	—	\$ 25,000 (Open Source Resource Project)
Contracts & Projects	\$ 373,707	\$ 209,970
PASSTHROUGH**	\$ 8,518,058	\$ 8,820,044
GRAND TOTAL	\$ 10,475,844	\$ 10,743,889
Income/Expense	\$(83,686)	\$38,242

	FY2009- 2010	FY2008- 2009
FUND BALANCE	\$ 922,937	\$ 1,006,623
Reserves:		
Close of Business	\$ 100,000	
Contingency	\$ 41,101	
Special Projects	\$ 50,00	
Transition Fund	\$304,896*	
* Set aside for layoff notification period		

* includes both staff and non-staff travel
 ** includes OCLC plus Cooperative Purchasing

Member Demographics

**366 LIBRARIES ARE MEMBERS OF WILS.
MEMBERSHIP HAS A THREE-TIERED STRUCTURE.**

66 Level 1 members:

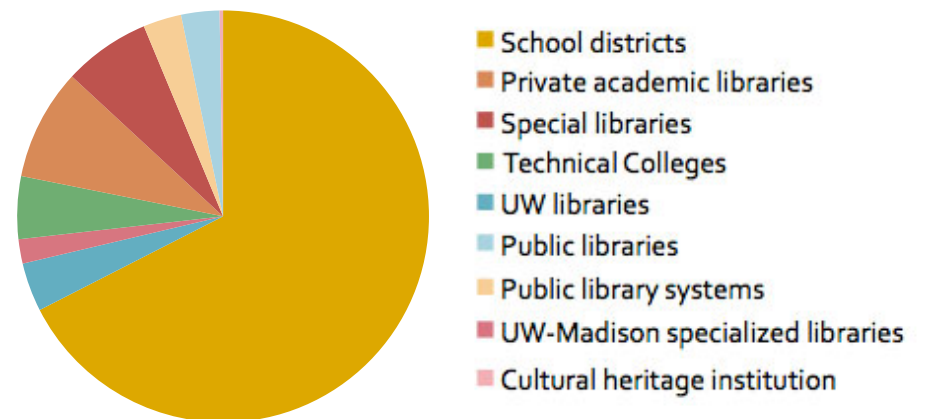
- 23 Private academic libraries
- 9 Special libraries
- 9 UW libraries
- 8 Public library systems (serving individual libraries)
- 7 UW-Madison specialized libraries
- 6 Technical Colleges
- 2 Public libraries
- 2 School districts

20 Level 2 members:

- 6 Special libraries
- 5 UW libraries
- 4 Private academic libraries
- 4 Technical Colleges
- 1 School district

280 Level 3 members:

- 244 School districts
- 10 Special libraries
- 9 Public libraries
- 8 Technical colleges
- 5 Private academic libraries
- 3 Public library systems
- 1 Cultural heritage institution



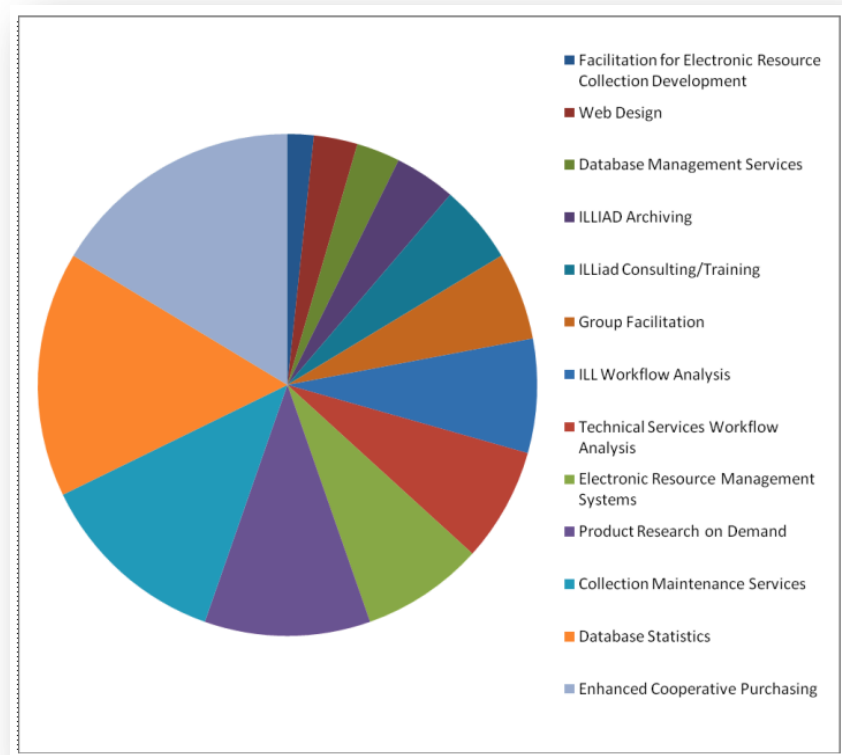
Member Response

Testimonials

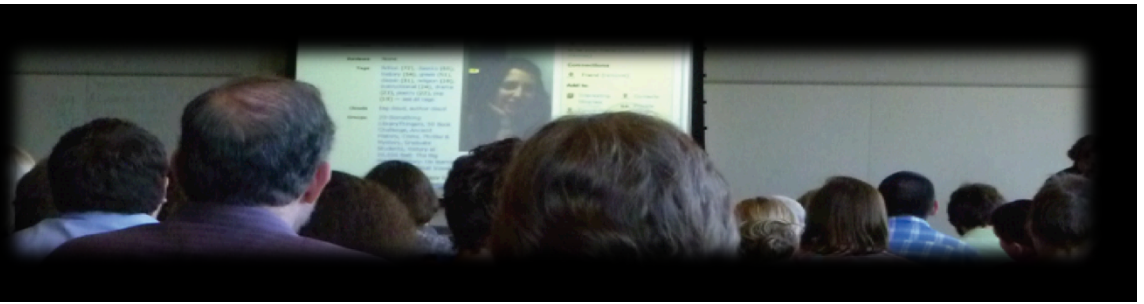
- This year at WiLSWorld, our member breakfast highlighted the new services that came out of the Level 1 Community Manager program. Here is what our members had to say:
- “Overall, we can’t be happier with the way WiLS has partnered with us on this project. Their expertise has been invaluable, and they saved us numerous hours in putting together a set of solutions for us. Given that time is often our most precious commodity, the value is incalculable.” –Gretel Stock-Kupperman, Viterbo University
- “Since my staff is small and their time is limited, weeding was a job often pushed aside. This opportunity to have the WiLS staff help me with a major weed was so exciting!” –Erin Coppers, Kohler Public Library
- “Explaining in detail to an outside source really has helped us take a closer look at what we are doing and has encouraged a good dialogue among the ILL Staff.” –Ewa Barczyk, UW-Milwaukee

Gathering Member Input

In April, WiLS Level 1 member libraries were queried on new services that were implemented or tested over the past year or to be considered. Each piece of the pie represents interest and participation by our Level 1 members in the new services. Getting the most votes were: enhanced cooperative purchasing, database statistics, collection maintenance services, and product research on demand.



Events



Conferences & User Meetings

July 21-22, 2010 [WiLSWorld Conference](#)

May 18, 2010 [Peer Council Meeting, Madison](#)

October 29-30, 2009 [Upper Midwest CONTENTdm User Group](#)

October 6, 2009 [WiLS and R&L Annual ILL Meeting](#)

[Open Solutions Online Series](#)

4/22 - Cool tools: Prezi and Zotero

4/15 - Mobile Site Generator

4/8 - Information, Not Location: MLibrary

4/1 - OCLC Web Services in Action

3/18 - Library H3lp

3/11 - Get Real, Be Creative: Social Networking in Libraries

NISO Series Online

June 9th: Control Your Vocabulary: Real-World Applications of Semantic Technology

May 12th: It's in the Mail—Best Practices for Resource Sharing

April 14th: RFID in Libraries—Standards and Expanding Use



Events and Outreach



[WorldCat Resource Sharing Basics](#)

4 online and 1 on-site workshops

[WorldCat Resource Sharing Tricks](#)

10 online and 1 on-site workshops

[Final Catalogers Clatsch Webinar](#)

OCLC Training Portal with Jane Richard ([slide pdf](#))

[AskAway Best Practices](#)

8 online sessions

[WiLS Hours](#)

Oh, The Places You'll Go! with an ERMS (Electronic Resource Management System) ([recording](#))

ILLiad 8.0 Starter Kit ([recording](#))

WLA recap: Workflow Analysis; Collection Development and Resource Sharing; Drupal in Your Library

Community Managers' Panel

WorldCat Local Quick Start with Mark Beatty

Business or Pleasure? Practical Social Networking for Professionals with Andrew Burkhardt

Related links available on WiLS Website:

[Current calendar](#)

[Newsletter Archive](#)



Site Visits



Northwest

Northland International
UW-Superior
UW-Stevens Point
CDC/CRS Stevens Point
Ashland University
Marshfield Clinic

Southwest

South Central Library System
Forest Products Laboratory
UW-La Crosse
UW-Madison MERIT
UW-Platteville
UW-Madison SLIS
Water Resources Library
UW-Madison GLS
Southwest Wisconsin Library System
Viterbo University
Wisconsin Historical Society

Northeast

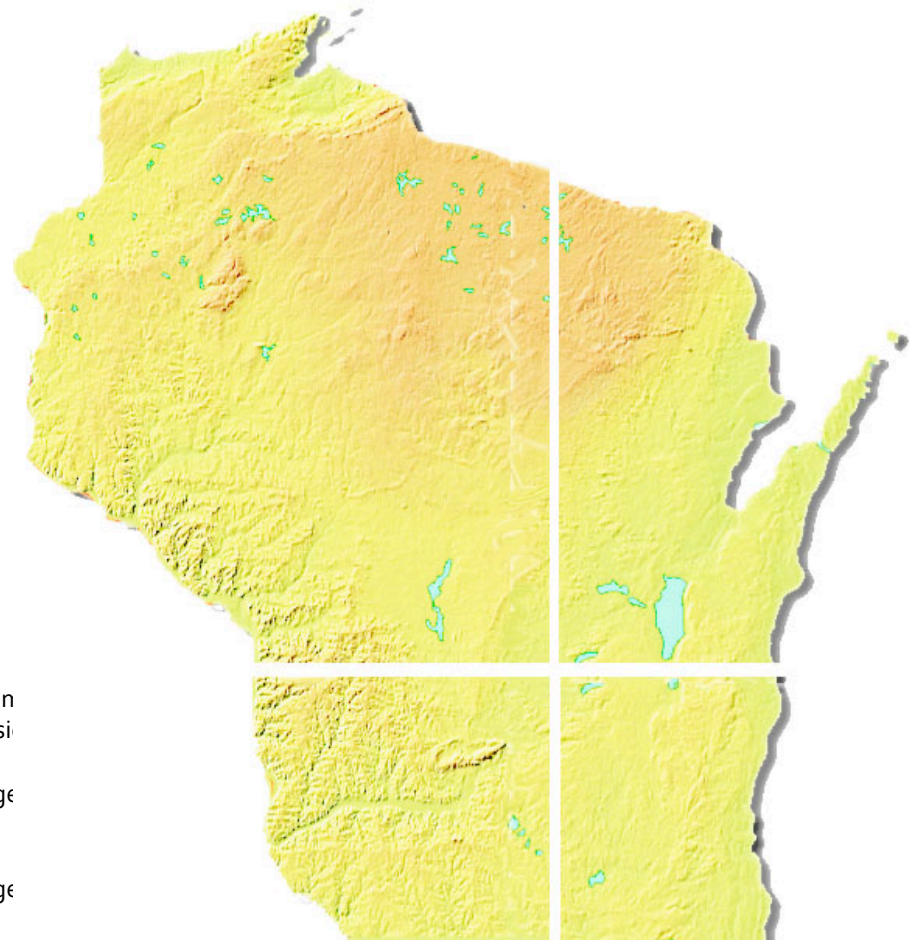
UW-Oshkosh
Winnefox Library System
Moraine Park
Ripon College
Nashotah House
Neenah
Manitowoc Public
UW-Oshkosh
Kohler Public Library
Eastern Shores Library System

Northeast

Nicolet College
Rhineland District Library
Wisconsin Valley Library System
OWLS
Fond du Lac Public Library

Southeast

Lakeland College
Silver Lake College
Milwaukee Public Museum
UW-Milwaukee
Arrowhead Library System
Blackhawk College
Alverno College
Lakeshores Library System
Cardinal Stritch University
Wisconsin Lutheran College
Milwaukee School of Engineering
Mount Mary College
Carroll University
Carthage College
Kenosha Public Library
Manitowoc-Calumet Library System
Milwaukee Institute of Art and Design
Medical College of Wisconsin
Waukesha County Technical College
New Berlin Public Library
Sacred Heart College
Waukesha County Technical College
Beloit College
Menominee Falls Public Library



WiLS Leadership 2009-10

The WiLS Board adopted a statement of Responsibilities of Board Members and a Statement of Ethics/Conflict of Interest, signed by each member, on the recommendation of our auditor. Discussion over the year focused closely on implementation of the new membership structure and the new service directions. Key issues included long-term financial sustainability and assessing member reaction to new services and fees.

Representing Private Colleges

Ane Carriveau—treasurer (Ripon), Lisa Viezbicke (Beloit),
Carol Brill—alternate (Alverno)

Representing Public Libraries/Systems

Phyllis Christensen (Marathon County Public Library), Paul Kiely—alternate
(Milwaukee Public Library), David Weinhold—Chair (Eastern Shores Library System),
Jeff Gilderson-Duwe—alternate (Winnefox Library System)

Representing School Libraries

Kathy Boguszewski (Janesville), Suzanne Zellmann (Mequon-Thiensville),
Esther Frost—alternate (Arcadia School District)

Representing Special Libraries

Leslie Christensen (St Mary's Hospital),
Megan Eggers—alternate (American Girl Mattel)

Representing Technical Colleges

Ron Edwards (Western Wisconsin Technical College), Janet White—alternate
(Blackhawk)

Representing UW System:

Sott Silet (Waukesha), Patrick Wilkinson—Chair Elect (Ohkosh),
Ewa Barczyk (Milwaukee), Ed Van Gemert—alternate (Madison)

Representing the DLTCL: Sally Drew (Wisconsin Reference and Loan)

Representing WiLS: Kathy Schneider

Finance Committee

The Finance Committee receives and reviews the annual Audit with special attention to the Management Letter and investigates and makes recommendations to the Board regarding member fees as well as monitoring income and expenses during the year. The Committee is composed of Board members and non Board members chosen for their special knowledge and experience in financial matters as well as key WiLS staff.

Board Members:

David Weinhold, Patrick Wilkinson, Ane Carriveau

Others: Peter Hamon, Mareda Weiss

WiLS Staff: Tom Klement, Kathy Schneider

Related links available on WiLS Website:

[Board representatives](#)

[Board meeting minutes](#)

[Budget](#)

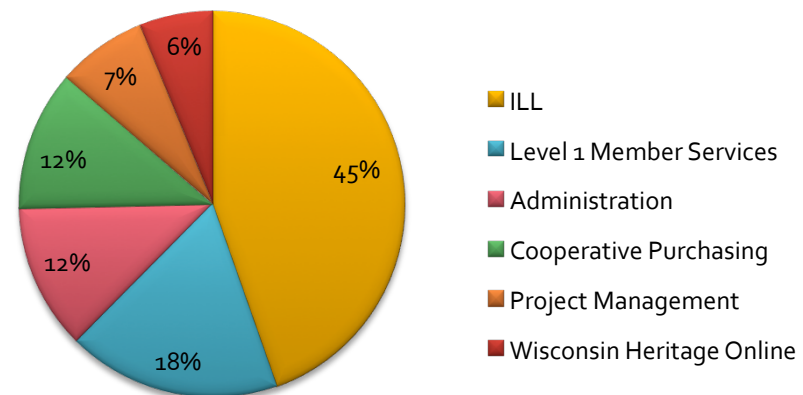
[Member Account Information](#)

WiLS Internal Organization 21.3 FTE

WiLS Staff

Mark Beatty, Trainer
Cheryl Bradley, Cooperative Purchasing Manager
Debbie Cardinal, Wisconsin Heritage Online Manager
Jennifer Champoux, Member Services Librarian
Nicole Fromm, Cataloging
Sara Gold, Cooperative Purchasing Librarian
Kirsten Houtman, Cooperative Purchasing Librarian
Tom Klement, Financial Consultant
Fran Metcalf, Reference Librarian
Angela Milock, ILL Services Librarian
Emily Pfotenhauer, WHO Outreach Specialist
Joy Pohlman, ILL Services Librarian
Jane Richard, Member Services
Eric Robinson, Interlibrary Loan Coordinator
Shirley Schenning, OCLC Billing and Events Planning
Kathy Schneider, Director
Bob Shaw, ILL Services Librarian
Allen Wenzel, ILL Automation
Sheila Zillner, Graphic/Web Designer
Tom Zillner, Research Coordinator

Student clerical support—Renee Peterson, Lisa Martin
Retrieval and shipping support—student assistants



STAFF UPDATES

- Nichole Fromm left WiLS to catalog for Madison Public Library, and we welcomed Jen Champoux as our research intern for a 2-year term. Jen keeps our Level 1 membership initiatives running smoothly.
- Angela Milock joined the WiLS ILL staff during the year.
- Kirsten Houtman transitioned from OCLC Services to managing the Cooperative Purchasing licensing for our academic libraries.