

*Welcome to the*

# WILS 2021 Membership Meeting

Thank you for joining us! We'll get started at 10:00 am so warm up your coffee or refill your water and get comfortable.

Feel free to use your video if you like, please remain muted if you aren't speaking, and if you have any questions during the meeting, drop them in the chat. We are monitoring and will answer them as we can!

While you wait, take a moment to respond to this question in the chat:

**What accomplishment from the last year are you most proud of, despite all the challenges of 2020?**

# HELLO!

**Paul Waelchli**, WiLS Board Chair  
Library Director, UW-Whitewater



# 2020: We did it together

**Jennifer Chamberlain,**  
WiLS Executive Director



# WiLS Board

**Hans Baierl**

*Moraine Park  
Technical College*

**Martha Berninger**

*Resource for  
Libraries and  
Lifelong Learning*

**Barbara Brattin**

*Kenosha Public  
Library*

**Nathan Dowd**

*Edgewood College*

**Kris McCoy**

*Mineral Point School  
District*

**Steve Platteter**

*Arrowhead Library  
System*

**Tasha Saecker**

*Appleton Public  
Library*

**Kristin Vogel**

*St. Norbert College*

**Teresa Voss**

*Verona Area School  
District*

**Heather Winter**

*Milwaukee Art  
Museum*

## Executive Committee

**Paul Waelchli**

*Chair  
UW-Whitewater*

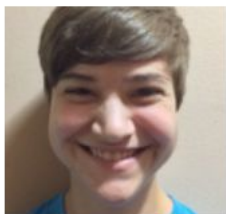
**Joe Davies**

*Chair-Elect  
Burlington Public  
Library*

**Peg Billing**

*Treasurer  
Lakeland Union High  
School*

# WiLS Staff



Sarah  
Birkholz



Jeff  
Brunner



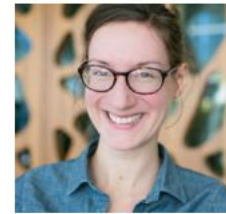
Jennifer  
Chamberlain



Melody  
Clark



Andi  
Coffin



Laura  
Damon-Moore



Sara  
Gold



Erin F.H.  
Hughes



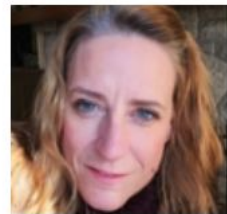
Kim  
Kiesewetter



Tom  
Klement



Lisa  
Marten



Melissa  
McLimans



Emily  
Pfothhauer



Rebecca  
Rosenstiel



Vicki  
Tobias



Kristen  
Whitson

# Guest speakers

# Michael Doyle

**Associate Vice Provost and Director  
of Libraries, UW-Milwaukee**

Strengthening diversity, equity, and  
inclusion across all aspects of library  
operations



# UWM LIBRARIES DEI PLAN

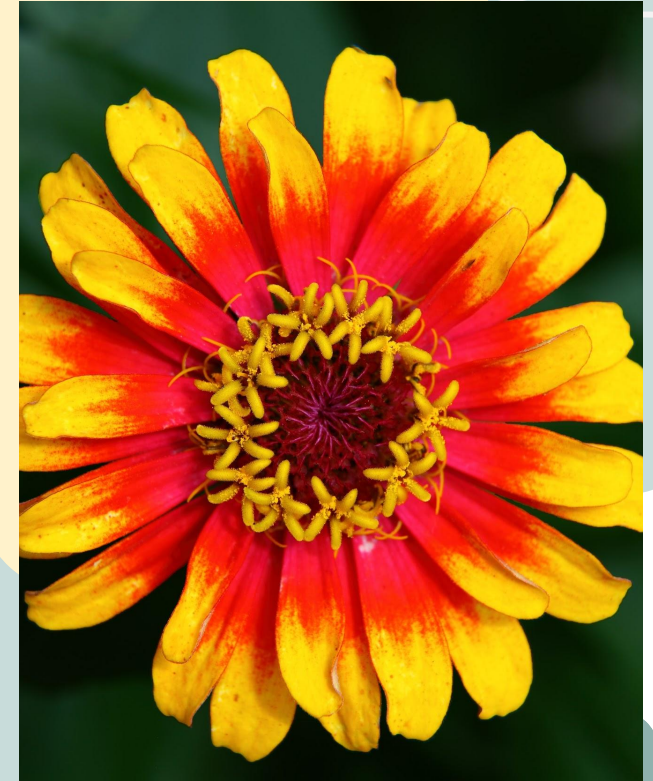
1. RECRUIT AND RETAIN A DIVERSE LIBRARY STAFF
2. ENHANCE LIBRARY COLLECTIONS AND PROGRAMS IN SUPPORT OF UWM'S TEACHING, LEARNING, AND RESEARCH MISSION
3. BUILD CULTURAL COMPETENCIES AMONG LIBRARY STAFF BY INCREASING DIVERSITY AWARENESS AND SENSITIVITY
4. ENSURE A RADICALLY WELCOMING AND INCLUSIVE ENVIRONMENT



# Svetha Hetzler

Director, Sun Prairie Public Library

Sun Prairie Public Library's Racial  
Literacy Plan





RACIAL LITERACY  
AT SUN PRAIRIE PUBLIC LIBRARY



SUN PRAIRIE  
PUBLIC LIBRARY

# RACIAL LITERACY

## **Plan of Action: 2020-2021**

- Professional & Staff Development
- Policies & Procedures
- Programming
- Collection Development
- Representation

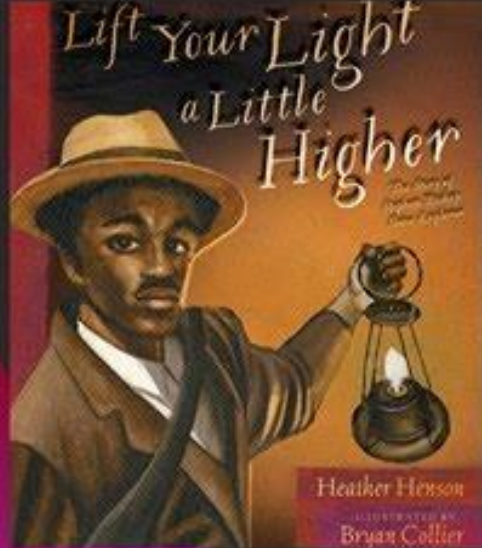


# RACIAL LITERACY


## Urban SUN Black Voices Book Club



++++



READ BY MS. LYNN



**CELEBRATE  
BLACK HISTORY  
MONTH WITH  
PICTURE BOOKS**

From the Sun Prairie Public Library

++++



# RACIAL LITERACY

## Urban SUN Black Voices Book Club

A new book club at the Sun Prairie Public Library.  
Led by Donna Mackey and Marilyn Ruffin.  
*Get ready to get uncomfortable and get real!*



- 4th Sunday of the month at 3:00pm on Zoom.
- Sept. 27 - *Becoming*, by Michelle Obama
  - Oct. 25 - *The Mothers*, by Brit Bennett
  - Nov. 22 - *The Fire Next Time*, by James Baldwin and *Between the World and Me*, by Ta-Nehisi Coates
  - Jan. 24 - *March* trilogy, by John Lewis and Andrew Aydin

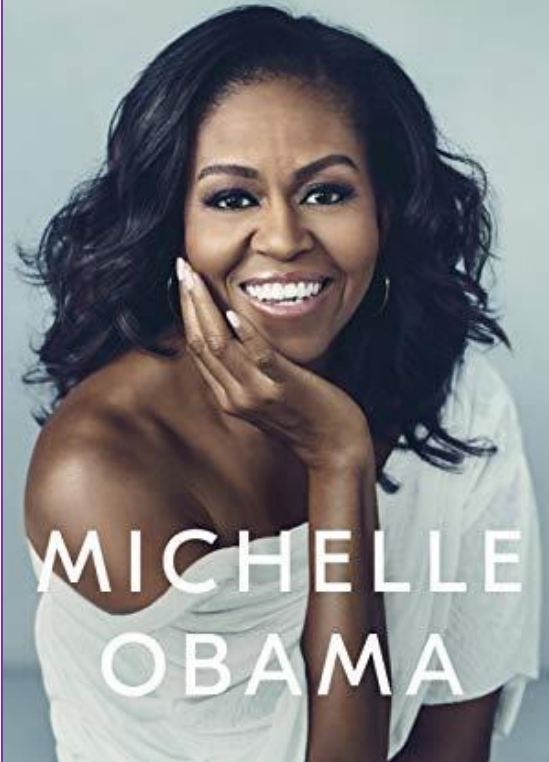
This book club is open to everyone, however please register for each discussion as space may be limited. A limited number of books are available at the library for those who register.

For more information, please call 825-0702 or visit: [www.sunprairiepubliclibrary.org/adults](http://www.sunprairiepubliclibrary.org/adults)

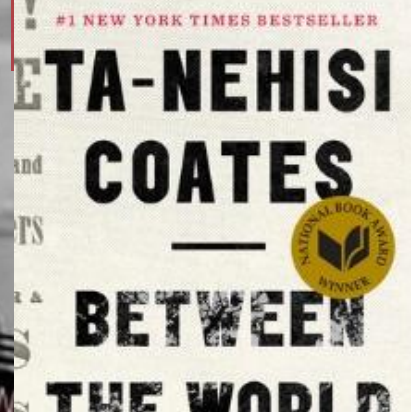
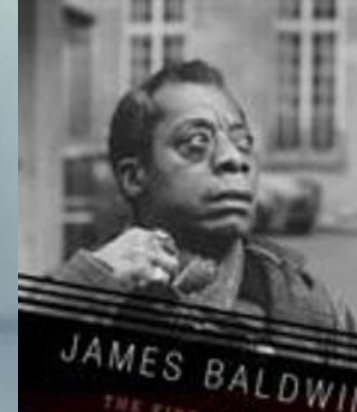
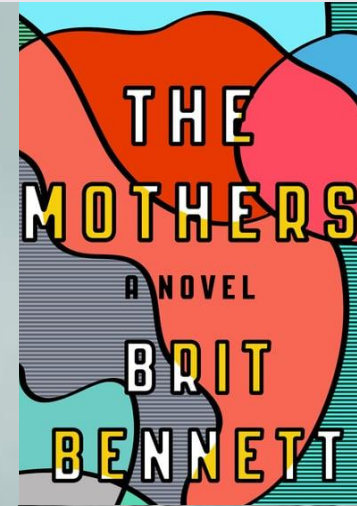


Sun Prairie Library • 1350 Linnerud Drive • 608-825-0702

# BECOMING



# MICHELLE OBAMA



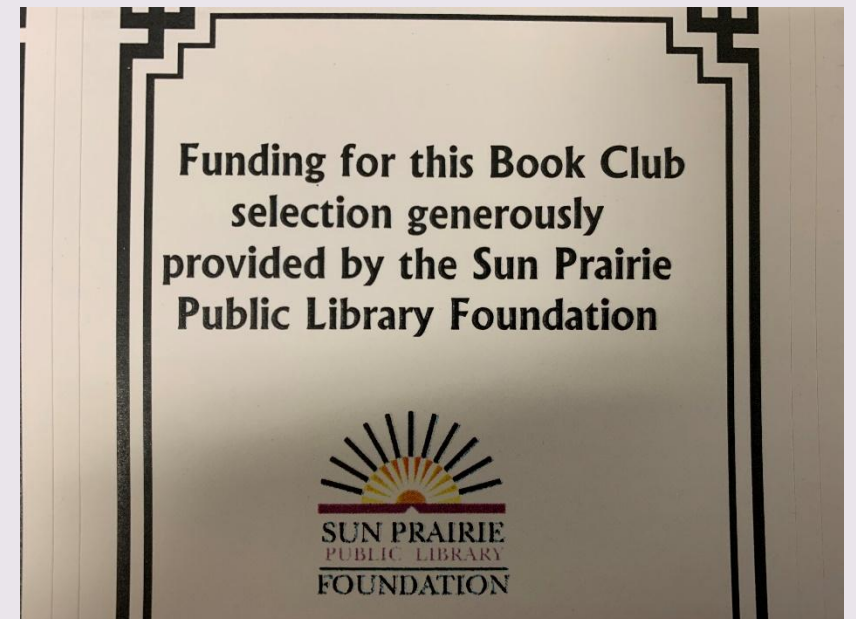
#1 NEW YORK TIMES BESTSELLER  
**TA-NEHISI COATES**  
NATIONAL BOOK AWARD WINNER  
**BETWEEN THE WORLD AND ME**  
"This is required reading." —Toni Morrison





RACIAL LITERACY

# Readers Advisory & Book Club Kits





# RACIAL LITERACY

## **Plan of Action: 2020-2021**

Endorsed by the Sun Prairie Public Library Board, August 13, 2020

Svetha Hetzler, Library Director

Rex Owens, President

Mary Bell, Vice-President

Mark Chin, Finance Chair

Sandy Pittelli, SPASD liaison

Theresa Stevens, City Council liaison

Ginger Baier

Heather Barkholtz

Rohit Vaidya

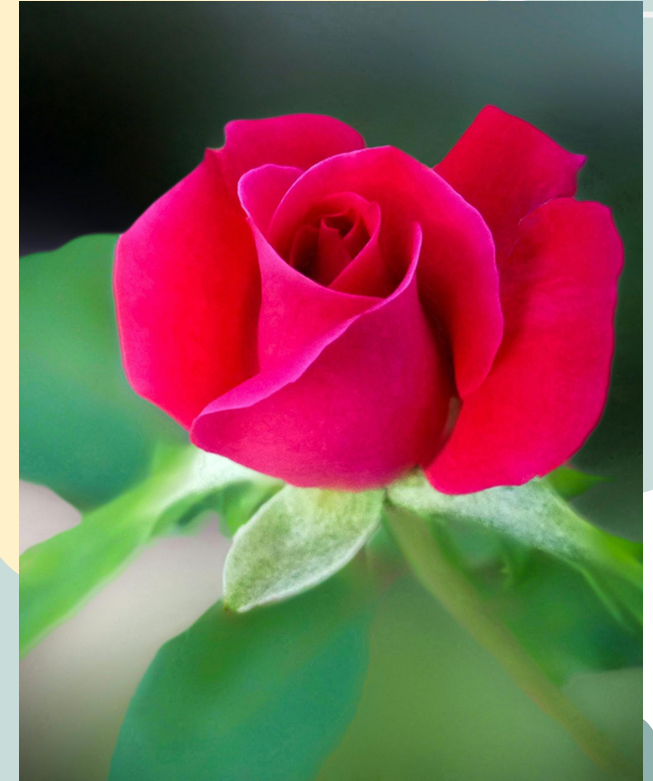
Kenneth Wenzel



# Paula Norman

**Library Media- Instructional  
Technology Coordinator, Tomahawk  
School District**

eSports club for students



TOMAHAWK ESPORTS



# MAKING CONNECTIONS ONE GAME AT A TIME

Presented by Paula Norman

# GENEROUS DONORS



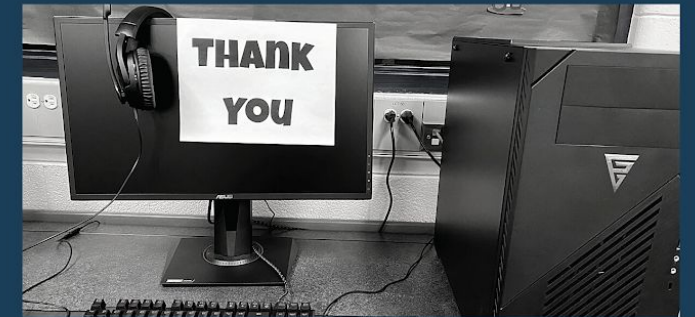
**\$5000**

WiLS kickstarted this club with the initial donation from the Grant. It bought us 3 computer systems + membership to [WIHSEA](#)



**\$3000**

The Tomahawk STAR Foundation met in December and agreed to support us (just shy of 2 computer systems)



**\$7500**

On January 1, TAFFY (Tomahawk Area Foundation for Youth) believed in the premise of this club and supported us just shy of the remaining 5 computers we needed.

# Our Timeline



## **AUGUST 2020**

Found out we received the grant from WILS

## **SEPTEMBER/OCTOBER 2020**

Apply for club status at school so we can accept grant. Find out interest level, elect officers, write bylaws, set code of conduct

## **NOVEMBER/DECEMBER 2020**

Write for more grants from local organizations and conduct our own fundraiser

## **JANUARY 2021**

Get computers set up and organize members and games to compete in Spring League

## **FEBRUARY 2021**

Begin pre-season competition in Rocket League and Smite

# Inclusion


The reason I started this club at Tomahawk was the lack of programming for students who did not participate in athletics or the fine arts. These students needed a "place" where they could belong especially during this pandemic and time of remote learning.

Statistics show an estimated 40% of students involved in esports have never participated in school activities.



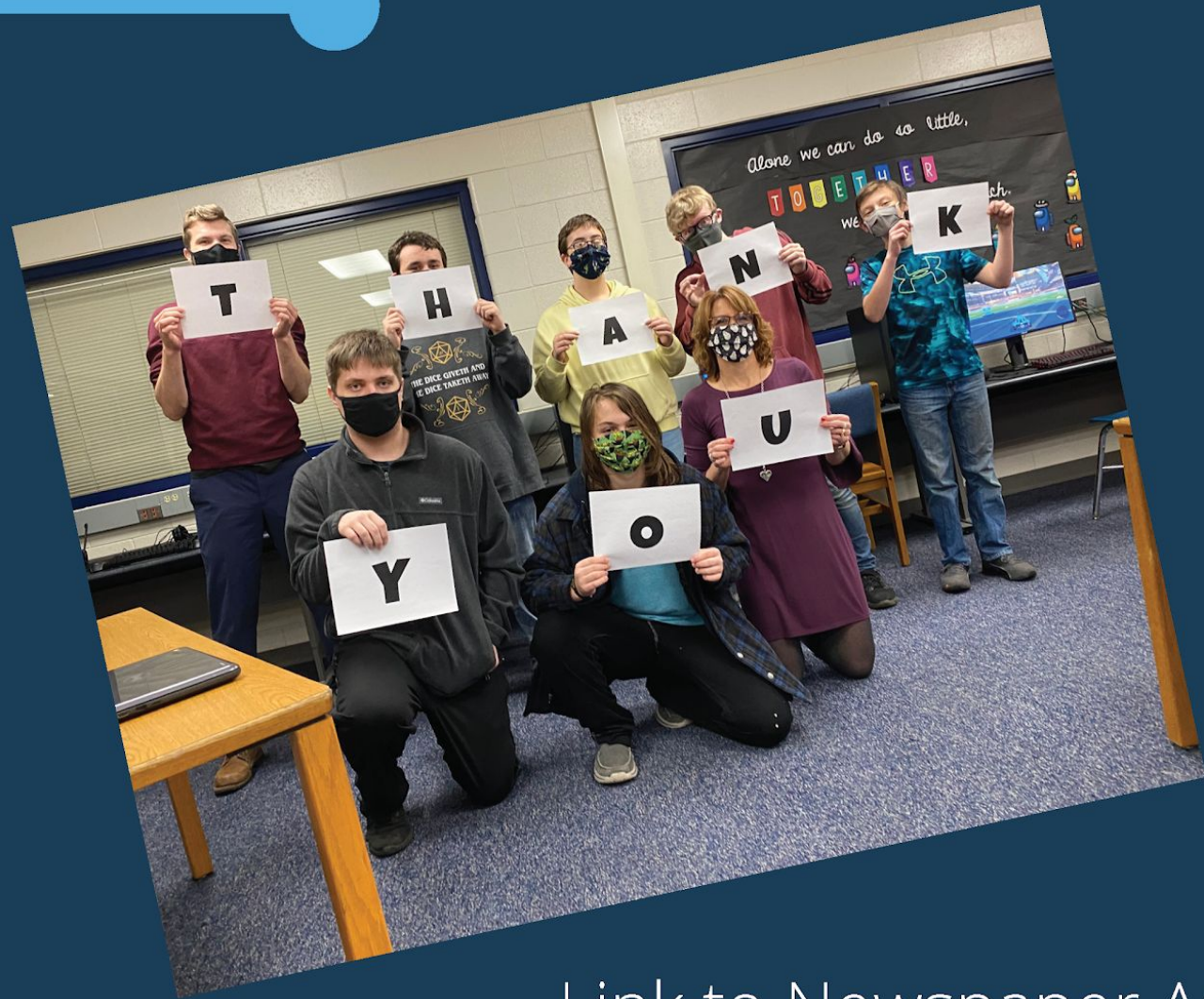


# Rising Popularity

- Only a handful of states had sanctioned esports programs in 2017. In 2020 it had expanded to 38 states.
  - eSports are thriving at the college level where scholarships have grown to an estimated \$15 million a year.
  - The industry needs game developers, designers, marketers, event planners and "shout-casters."
- 



**HAVING FUN**



Those who have started eSports programs say it's possible for one person to get a program off the ground, but it takes a wide circle of support--from school administrators and teachers to parents and in our case--foundations and community support.

[Link to Newspaper Article](#)

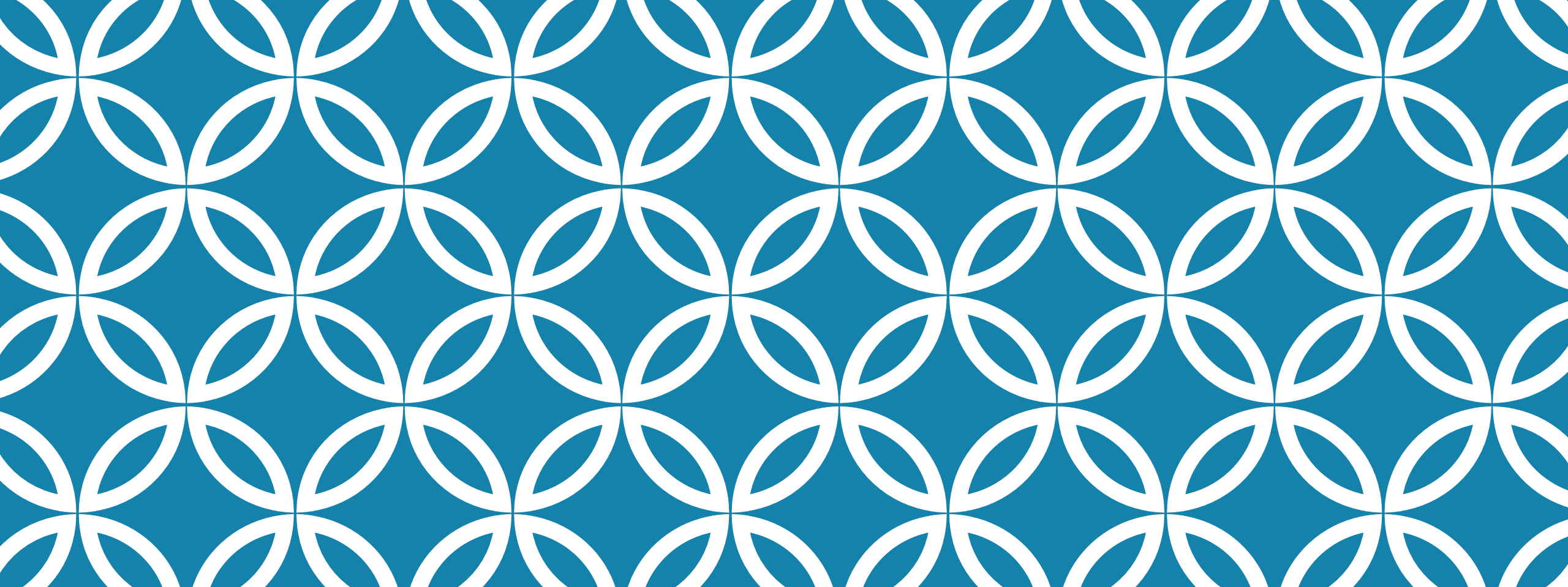


# Angie Bodzislaw

**Director, Spooner Memorial Library**

Washburn County collaborations to serve the community during 2020 shelter-at-home period and beyond





# SPOONER MEMORIAL LIBRARY

Community Response to Covid-19  
Angie Bodzislav, Director



Community  
First  
Washburn County





USDA

# FARMERS TO FAMILIES FOOD BOX PROGRAM

47

Individuals volunteered through the Community First network

\$272,000

Fiscal impact on the community

6,124

Food boxes were distributed to local families



## COMMUNITY FIRST - WASHBURN COUNTY PROGRAM UPDATES:

### 1 **Volunteering Efforts:** 62 VOLUNTEERS

COMMUNITY FIRST OF WC (CFWC) WAS ORIGINALLY CREATED THROUGH THE DESIRE TO MEET THE NEEDS OF WC RESIDENTS DURING COVID-19. CFWC IS FULLY\* COMPRISED OF A VOLUNTEER NETWORK INCLUDING AREA AND ORGANIZATIONAL LEADERS AND COMMUNITY MEMBERS. 24 VOLUNTEER MAKE UP A COMMITTEE STRUCTURE, BROKEN DOWN EVEN FURTHER TO SUB-COMMITTEES TO ENSURE THAT SERVICES ARE CREATED AND IMPLEMENTED TIMELY AND EFFECTIVELY TO THE PUBLIC. THERE IS ALSO A POOL OF 38 VOLUNTEERS TO FILL THE SPOTS FOR DELIVERING CARE PACKAGES AND SUPPLEMENTAL MEALS TO THOSE IN NEED.

**APPROXIMATELY 795 MILES DRIVEN WEEKLY BY VOLUNTEERS TO DELIVER MEALS TO RECIPIENTS HOMES FOR THE SUPPLEMENTAL MEAL PROGRAM.**

### 2 **Community Support/Donations:**

DUE TO THE GENEROSITY OF COMMUNITY MEMBERS AND LOCAL BUSINESSES, COMMUNITY FIRST WC

**\$43,500**

HAS RAISED APPROXIMATELY ... 100% OF THESE FUNDS WILL GO DIRECTLY TOWARDS CARE PACKAGES, SUPPLEMENTAL MEALS, AND FUTURE NEEDS INITIATIVES. THE CARE PACKAGE INITIATIVE WAS STARTED WITH AN ADDITIONAL GIFT OF \$10,000 FROM MARSHFIELD CLINIC.

### 3 **Care Packages:** 561 CARE PACKAGES DISTRIBUTED

SPOONER - 180; MINONG - 78; SHELL LAKE - 69; BIRCHWOOD - 144; HOME DELIVERED - 90...

**THIS MEANS, A TOTAL OF UP TO APPROX. 561 FAMILIES/HOUSEHOLDS**

**HAVE BEEN IMPACTED THROUGH THE CARE PACKAGE PROGRAM...**

CARE PACKAGES CONTAIN ITEMS SUCH AS HYGIENIC SUPPLIES, CLEANING SUPPLIES, ACTIVITIES, NOTES OF ENCOURAGEMENT, DISINFECTANTS/HAND SANITIZER/WIPES, ETC.

### 4 **Supplemental Meal Program:** 1,436 MEALS...

- WEEK 1 OF THE SUPPLEMENTAL MEAL PROGRAM (SMP) - APPROX. 638 MEALS DELIVERED...

- WEEK 2 OF THE SMP - 798 MEALS DELIVERED

- WEEK 3 OF THE SMP - 802 MEALS WILL BE DELIVERED (CURRENTLY ON Wk.3)

**84 HOUSEHOLDS ARE IMPACTED THROUGH THE PROGRAM - APPROX. 160 ADULTS AND 122 CHILDREN.**

### 5 **Businesses Impacted:** 24 LOCAL BUSINESSES

THROUGH OUR EFFORT TO PURCHASE CARE PACKAGE SUPPLIES AND MEALS LOCALLY FROM BUSINESSES AND RESTAURANTS, WE HAVE POSITIVELY IMPACTED 24 LOCAL BUSINESSES (THIS NUMBER CONTINUES TO GROW AS FUNDING BECOMES AVAILABLE). THIS IS AN APPROXIMATE TOTAL OF \$17,300 LOCALLY SPENT TO DATE. THE SMP CONTINUES TO SPEND APPROXIMATELY \$4,700 WEEKLY TOWARDS AREA RESTAURANTS.

\*COMMUNITY FIRST DOES CONTAIN ONE PAID PROGRAM MANAGER FUNDED THROUGH WC HEALTH AND HUMAN SERVICES; THE REST OF CF IS COMPRISED SOLELY OF VOLUNTEERS.

THANK YOU TO ALL OF OUR GENEROUS VOLUNTEERS, DONORS, AND PARTNERS! Community First

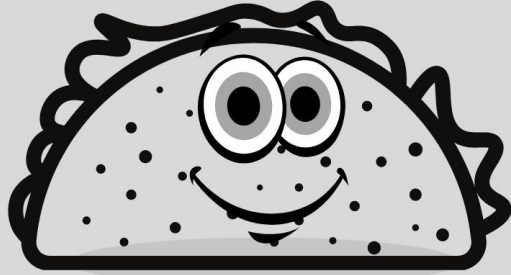
YOU CAN CONTINUE TO DONATE BY SENDING CHECKS TO

ATTN: COMMUNITY FIRST WC, LAKELAND FAMILY RESOURCE CENTER, 819 ASH ST, SPOONER WI 54801



# "LET'S TACO 'BOUT IT"

Washburn County Family Fest  
on-the-go



Drive thru for a **FREE** family bag including family activities, "Small Talks" conversation starters, taco recipes, family craft, & taco seasoning packet.

**Tuesday, October 13th**  
**4:00 - 6:00 p.m.**

### Location Options

**Spoooner: Spoooner Library**

**Shell Lake: Beach (parking lot by fish)**

**Minong: Shell Lake State Bank**

**Birchwood: Ed's Pitstop Parking Lot**



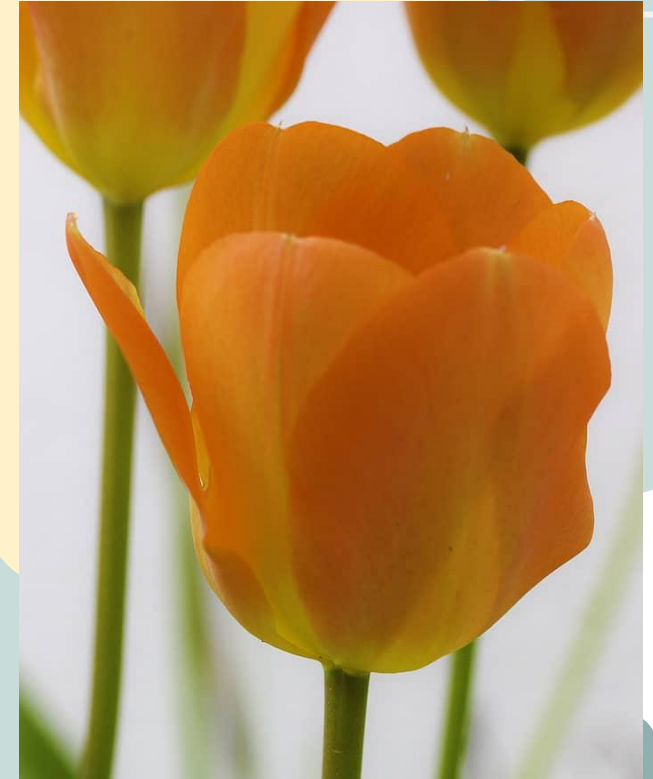
Community Alliance  
for Prevention  
Washburn County

Sponsored by the Washburn  
County AODA grant and  
Washburn County Family  
Festival.

# Zander Miller

**Digital Strategies Librarian,  
Kenosha Public Library**

Responding to Kenosha unrest after  
Jacob Blake was shot by police



**What accomplishment from the last year are you most proud of, despite all the challenges of 2020?**



# WiLS Updates!

# Equity, Diversity, Inclusion

Laura Damon-Moore

# EDI work - a multi-pronged approach

***We are committed to equity, diversity, and inclusion.***

*We believe our community is stronger when people with a wide array of experiences and perspectives come together. We strive to create thoughtful and respectful environments where those interactions can take place.*

- *WiLS Mission and Organizational Values*

# EDI work - internal

- Establish EDI workgroup
- Apply a two-way EDI lens:
  - Mapping the work that is already happening
  - Personal work plans and pro bono work

# EDI work - in support of members

- Work with vendors
- Academic business model restructure
- Member survey about EDI resources

# Digital Collections in 2020

Kim Kiesewetter



# Community Building in Virtual Environments

Melissa McLimans  
Vicki Tobias  
Kristen Whitson

**Virtual meetings are  
basically modern seances**



“There’s someone who wants to join us.”

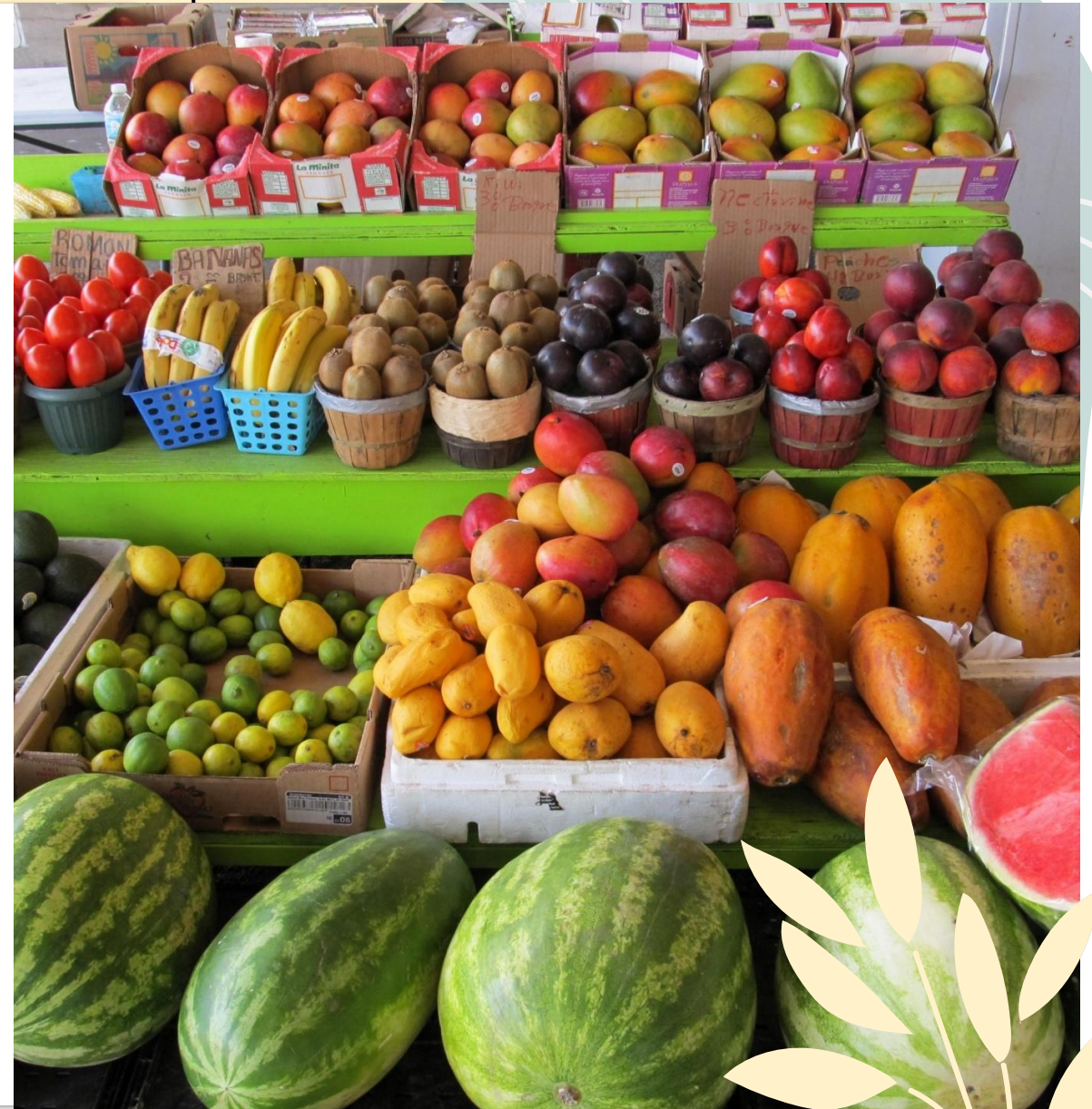
”Elizabeth, are you there?”

“We can’t hear you.”

”Can you hear us?”

# Products and Pricing

Sara Gold





# Increased Accessibility

Access to resources previously for in-library use only

Free digital resources

Increased communication



# Renewal Negotiations

CARES Act Funding

Flat renewal pricing

Springer Nature



# Connecting Vendor Partners with Members

WILS

Taco

Talking About Coop Opportunities

TUESDAY

WILS

# Recollection Wisconsin Responds

Emily Pfothenhauer

*Image: Lester Public Library/University of Wisconsin Digital Collections*

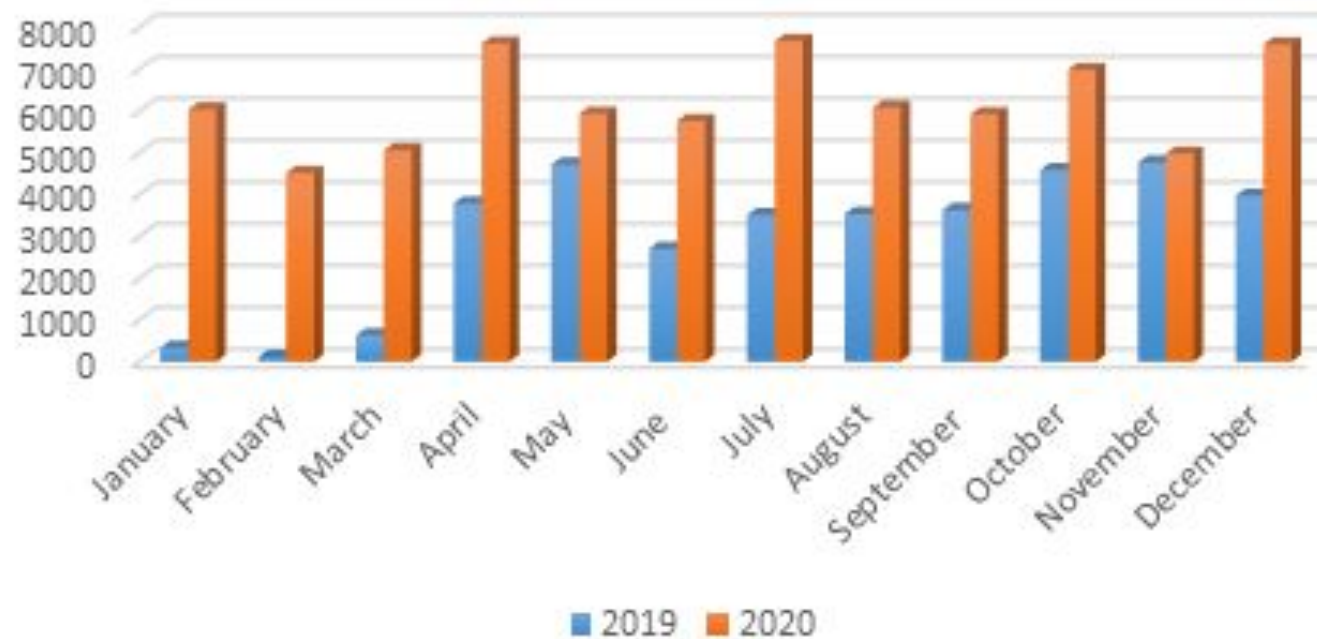


# Adapting to budget impacts

- Making our project management time more predictable and efficient
  - Recollection Wisconsin office hours
  - Lots of documentation!
- DOA COVID-19 Cultural Organization Grant Program

# Virtual learning = increased use

Recollection Wisconsin Page Views



# Equity, diversity, and inclusion

***Recollection Wisconsin strategic priority: Develop the shared collection to foster diversity and inclusion, so that more Wisconsin residents can see their stories represented.***

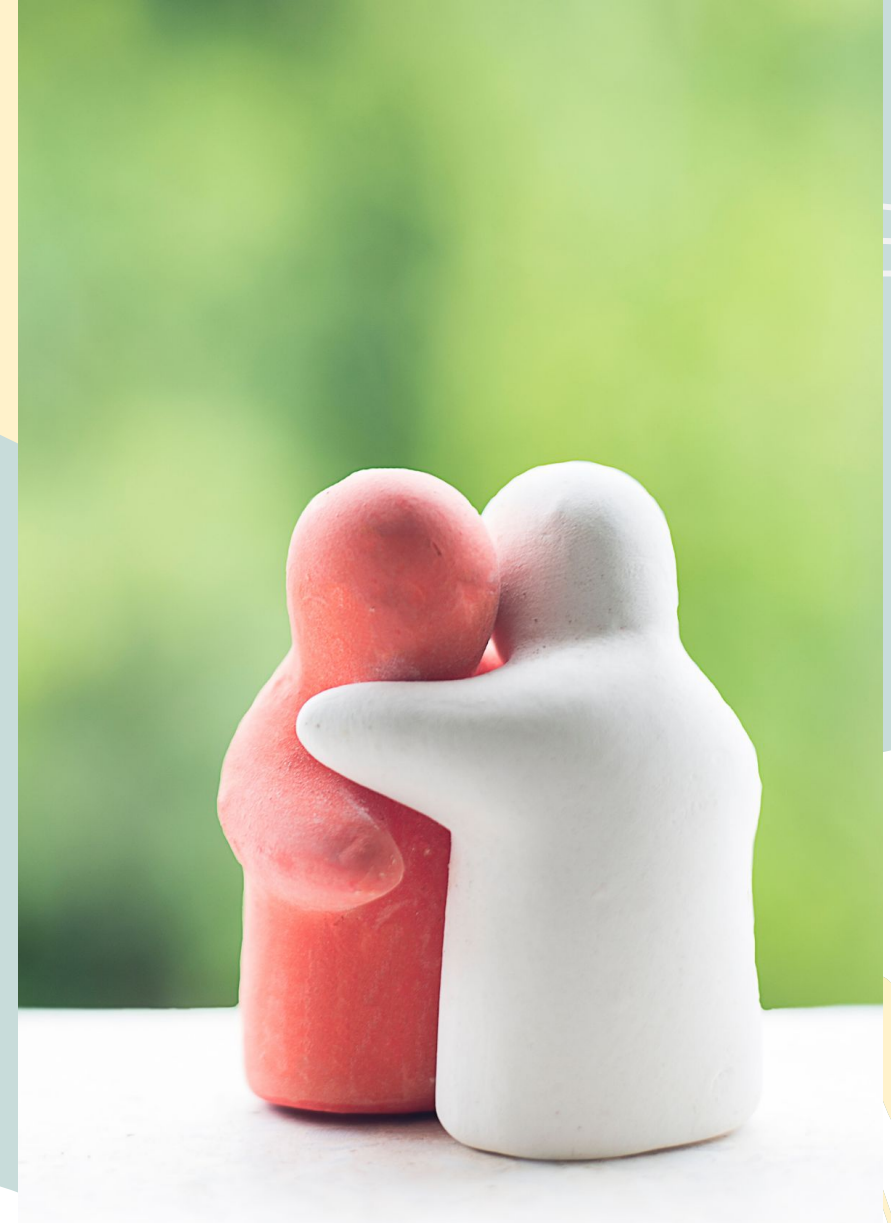
- Gap analysis
- DPLA IDEAS statement

# Staff Support and Wellbeing

Andi Coffin

***“A world that is changing requires changing how we work.”***

*Katherine Maher, Wikimedia Foundation*



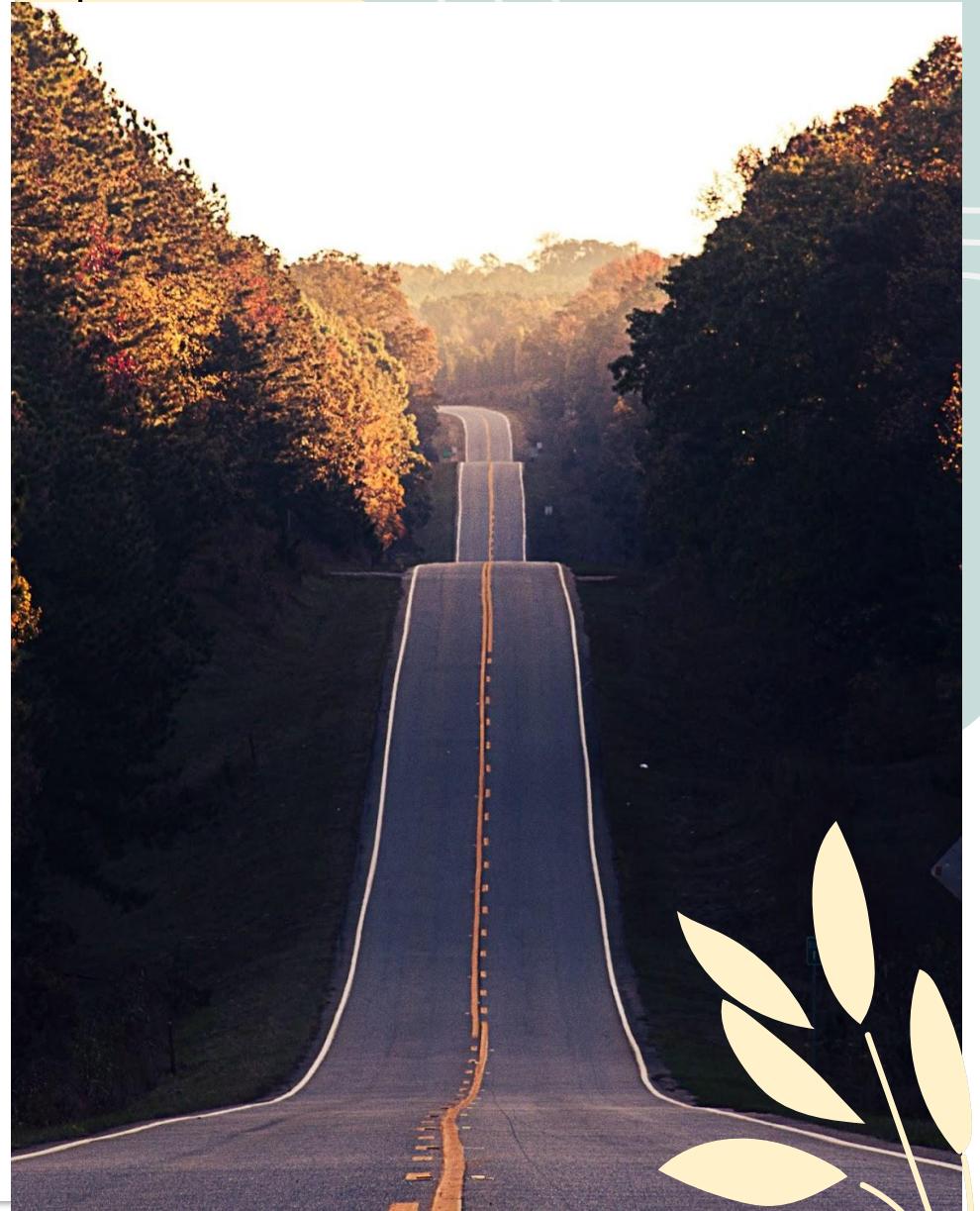


# Staff Support and Wellbeing

- Shorten the full time work week to 30 hours
- Support staff need to connect with friends, family, and one another
- Staff retreat focused on wellbeing
- Space and grace, for colleagues and members

# What's next?

Jennifer Chamberlain



# Looking ahead to 2021

## **Improve the member experience**

a redesigned MyWiLS portal and WiLS website and improvements to our academic cooperative purchasing business model.

## **Highlight WiLS' role as connector**

developing statewide collaborative projects, infrastructure for information sharing, and communities of practice.

## **Showcase responsive services**

addressing real-time member need in new product and vendor scouting and service development.

## **Operationalize our values**

investing in our member community and identifying or creating opportunities to advance equity, diversity, and inclusion.

**Any questions?**

# Thank you!

