



WILS
2022
ANNUAL
REPORT

WELCOME

From Jennifer Chamberlain, WiLS Executive Director



2022 was a big deal around here. It's the year WiLS celebrated our 50th birthday and as someone tiptoeing awfully close to that milestone myself, I have to say we've never looked better. Nifty Fifty!

It's also the year we decided to channel our consulting expertise inward, and use our strategic planning chops (we've helped close to 90 libraries develop their own strategic plans) to build our five-year plan. It was personally an incredibly meaningful experience to partner with staff, the board, and our membership to create something that just feels, well, WiLSy. You can read more about it later in this report.

Of course 2022 has a myriad of other accomplishments, and the impressive numbers and project highlights are here for you to read in this groovy report. So as my cat Cleo and I wave goodbye to 2022 and welcome 2023, please know that WiLS will continue focusing on strengthening the communities we work with, fueling innovation, and supporting our member organizations' health and happiness!

TABLE OF CONTENTS



Who we are



What we did



Our community



Looking ahead



Special in 2022



Connect with us





WHO WE ARE



WHO WE ARE



Jeff Brunner



Jennifer Chamberlain



Melody Clark



Andi Coffin



Laura Damon-Moore



Kelsie Flack



Sara Gold



Erin F.H. Hughes



Kim Kiesewetter



Tom Klement



Lisa Marten



Melissa McLimans



Emily Pfothhauer



Rebecca Rosenstiel



Nick Smith



Kristen Whitson



OUR MISSION

We believe libraries, cultural institutions, and their partners make the world a better place.

We build relationships and provide services so they can do more with their time and money.

We help our members turn ideas into action.



OUR VALUES

We work in the best interest of our members.

We are optimistic about the future of our members.

We promote new ideas and experimentation.

We strive to do the best we can.

We believe that we're all in this together.

We are committed to equity, diversity, and inclusion.

We stand up for our members and their values.



OUR COMMUNITY





665
organizations

OUR MEMBERS

78 academic libraries

298 K12 school libraries

234 public libraries &
library systems

55 other libraries &
cultural organizations

WHAT WE PROVIDE MEMBERS



Time



Resources



Expertise



Community



SPECIAL FOR 2022



WiLS was born to the University of Wisconsin System in 1972...

This year, we celebrated our 50th birthday with 665 member organizations: libraries of every type - K12, public, academic, and special - as well as cultural organizations like museums and historical societies. We held a birthday bash with members at the WLA Annual Conference in Lake Geneva. We updated our history on our website and added some reflections from former staff and current members. We made a short video and a bunch of fun birthday logos. We partied all year.



We built
a groovy
new
home!

<https://wils.org/>





WHAT WE DID



COOPERATIVE PURCHASING

<https://www.wils.org/do/coop/>

453

academic, public,
K12, and special
libraries in
Wisconsin and
beyond participate
in WiLS'
Cooperative
Purchasing Service

NEW IN 2022



WiLS manages **2899** subscriptions

(**233** of them new in 2022!)

WiLS works with **118** vendors

(**5** of them new in 2022!)

2022 HAPPENINGS

Vendor & Product Catalog

Our new website feature helps members quickly and easily find the products they are looking for, request a quote, and get the purchase process rolling.

Services for Public Libraries

We have been working to raise public libraries' awareness of our services and welcome the public library systems that have joined to save time and money through consortial purchases and e-resource management.

Taco Tuesdays

We featured 24 vendors in 2022 Taco Tuesdays, 15-minute live recorded demos that fit our members' schedules and showcase our vendors' valuable products.

CONSULTING SERVICES

<https://www.wils.org/do/consult>



2022 IN NUMBERS



Public
Libraries

10% of the public
libraries in Wisconsin!



Library
Systems

44% of Wisconsin
systems in 2022!



Focus group & SOAR
participants

Strengths, Opportunities,
Aspirations, Results



Surveys
Responses

Helping organizations
know their communities

2022 HAPPENINGS

Tried and True

Our bread and butter service of strategic planning consulting continued to thrive with three one on one plans and another successful small library strategic planning cohort completed! We helped 9 libraries develop plans in the past year to help guide them in their work.

In With the New

Responding to member and community needs, we added a data dashboard subscription service, more archives consulting, and a preliminary phase of strategic planning which involves gathering staff input to increase engagement and ensure all stakeholders have a voice.

2022 BIG DEALS

We assisted DPI in developing the state's LSTA five year plan.

We helped the City Library Collective receive and spend a \$143,000 ARPA grant to explore social work concepts in libraries.

We facilitated the successful merger of Arrowhead Library System and Lakeshores Library System to form the Prairie Lakes Library System!

We managed the Public Library Annual Report collection process.

COLLABORATION SUPPORT

<https://www.wils.org/do/collab/>



In 2022, residents
checked out

7.6
million

items from
Wisconsin's Digital
Library!

New Directions

The WPLC implemented two new steering committees: the Digital Archives Backup Collaboration Steering Committee and the Technology Backup Collaboration Steering Committee.

Diversity Improvements

Following a 2022 diversity audit, WiLS project managers developed the Diverse Collection Support Toolkit, a monthly module shared with selectors with resources to support their work to create a collection that represents diversity in genres, authors, and titles. A second audit was conducted in July to measure progress within the project.



WISCONSIN SCHOOLS DIGITAL LIBRARY CONSORTIUM

241

Districts

Nearly half of K12 districts in Wisconsin.

327k

Students

30% of K12 students in Wisconsin.

17k

Titles

Ebooks, digital audiobooks, comics, etc.

54k

Copies

Students get the materials they need

<https://wsdlc.org/>

Reach More Readers Challenge

In May, WSDLC launched a friendly competition between all members aimed at getting more students to log in to Sora to help combat the Summer Slide. This competition was simple; schools that saw the highest percentage increase of unique users who checked out a title in May compared to March were declared winners and received a package of Sora swag (and bragging rights!).

All Access Comics Collection

In March, the WSDLC added a collection of over 1,700 popular comics and graphic novels. All of the titles included in this collection are available to be checked out by students immediately - there are never any holds or waitlists - and have content available for every grade level.

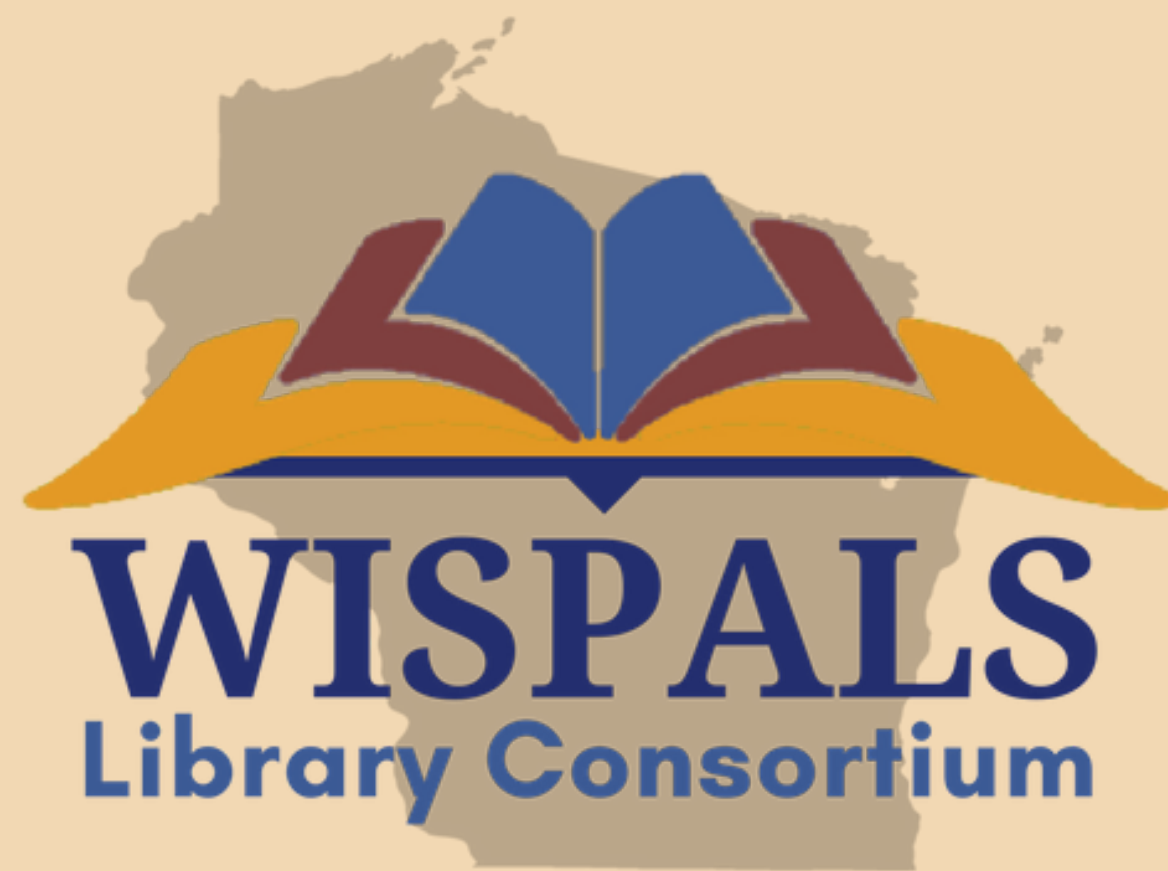
<https://wsdlc.org/>



In 2022, students checked out

1.3 million

items from the Wisconsin Schools Digital Library!



WISPALS is a consortium of 11 Wisconsin technical college libraries that share an integrated library system and maintain an information network to support student success and faculty needs.

NEW IN 2022

WISPALS welcomed a new member – Blackhawk Technical College – to the consortium in July.

The consortium connected to faculty in multiple program areas to understand how the library meets their needs and what could be improved.

WISPALS developed a worksheet to guide libraries in the creation of student advisory boards.

The consortium created a user and non-user survey to better understand the library needs of students.

<https://www.wispals.org/>

recollection



W I S C O N S I N

Our Community

Recollection Wisconsin brought 8 new content partners aboard and added more than 22,000 resources. The consortium saw a 16% increase in collection usage over 2021, continuing a trend of significant increases since 2019.

For Practitioners

Recollection Wisconsin fully revised the Digital Readiness Toolkit, a complete guide to creating and tending a digital collection. The Toolkit was developed specifically for the needs of small cultural heritage organizations and is freely available for anyone to use.

For Educators

Recollection Wisconsin improved educators' awareness of and access to content partners' collections by launching a refreshed website and new themes, drawing on the needs of social studies teachers in grades 3-5.

<https://recollectionwisconsin.org/>

248 Wisconsin libraries, archives, museums, and historical societies rely on Recollection Wisconsin to:

help with digitization questions and equipment

provide guidance on describing resources so users can find them

share their community's history with the world in the Digital Public Library of America

safeguard those valuable pieces of history so they are available far into the future



...and more!

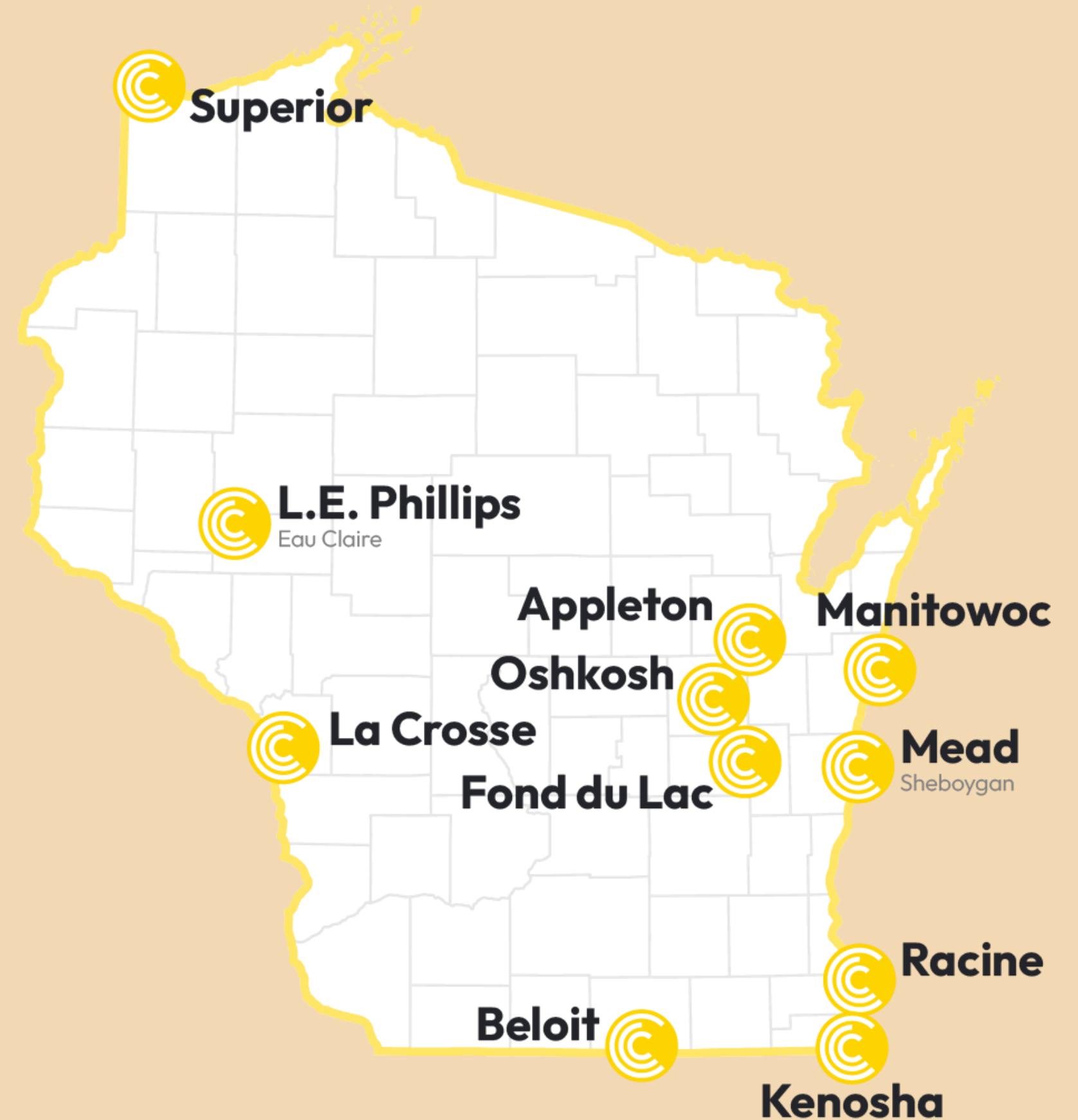
<https://recollectionwisconsin.org/>



The City Library Collective comprises 11 member libraries serving mid-size communities throughout Wisconsin. Together they address common concerns, pool knowledge on service improvement, and incubate solutions to challenges all public libraries face.

In 2022, the CLC created the Library Resilience Toolkit to help others explore how to apply concepts of social work in their libraries, whether they are just beginning or they are ready to hire a social worker.

<https://citylibrarycollective.org/>



ALA Libraries Transforming Communities Hub



In 2021 and 2022, WiLS facilitated a regional hub to offer support for grantees in ALA's Libraries Transforming Communities program. The hub has about 50 participating libraries from the Upper Midwest and they explored relevant topics and navigated shared challenges together.

Horticulture Library Consortium



WiLS helped establish the Horticulture Library Consortium in 2014 by managing the research and purchase of a shared ebook collection. This year, the consortium added two new members, bringing the total membership to 10 organizations across the US.

DIGITAL PROJECTS

<https://www.wils.org/do/digital-projects/>

IMLS Community Memory Cohorts

Since 2019, WiLS has been a mentor organization providing support and guidance for cohorts of small, rural, and tribal libraries from around the country that are embarking on community memory projects, thanks to Accelerating Promising Practices funding from IMLS.



In its second year, the Curating Indigenous Digital Collections project is working with partners from the Stockbridge–Munsee Community to advance the creation and preservation of digital collections in Wisconsin's tribal archives, libraries, and museums. The project utilizes Mukurtu, a digital archiving platform designed to meet the unique needs of Indigenous communities to manage, share, and access digital materials in culturally relevant and ethically-minded ways.

GIVING BACK

<https://www.wils.org/do/giving-back/>

WILS IDEAS to ACTION FUND

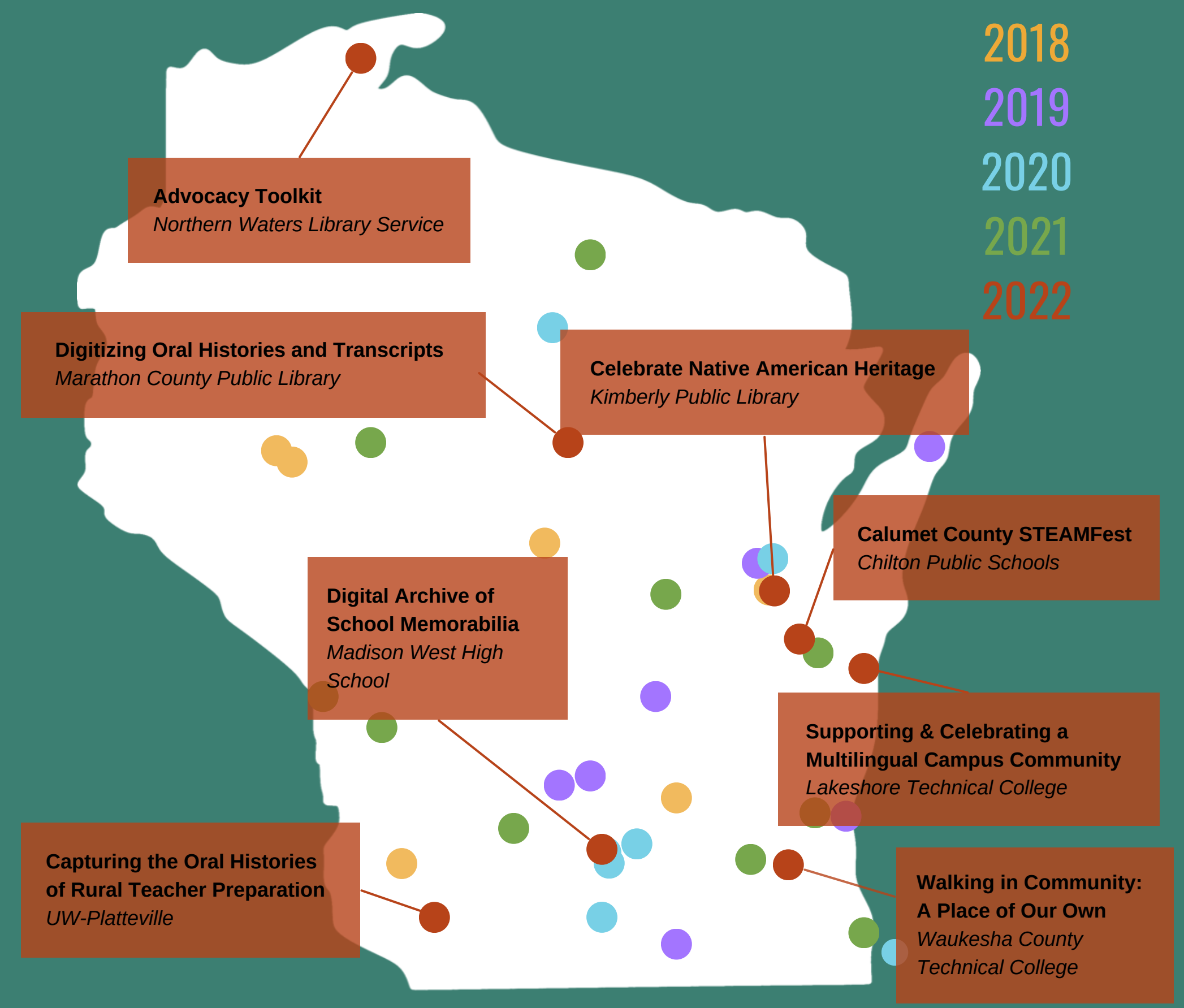
BRINGING YOUR IDEAS TO LIFE

\$35,000

awarded to 8 WILS members in 2022

\$155,000

awarded to 38 members since 2018



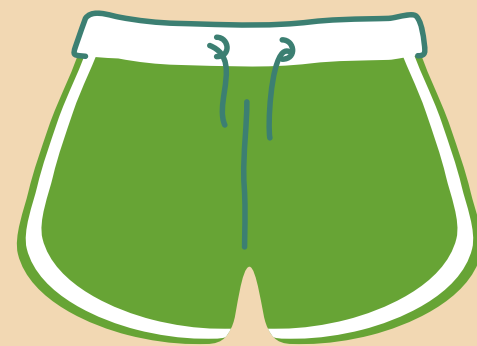
<https://www.wils.org/ideas-to-action/>

320 people registered to attend

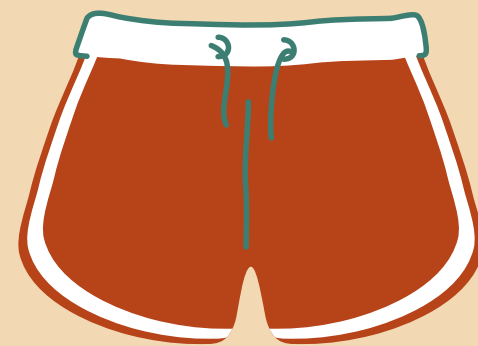
6 WiLSWorld Shorts



**Intellectual
Freedom**



**Virtual
Events**



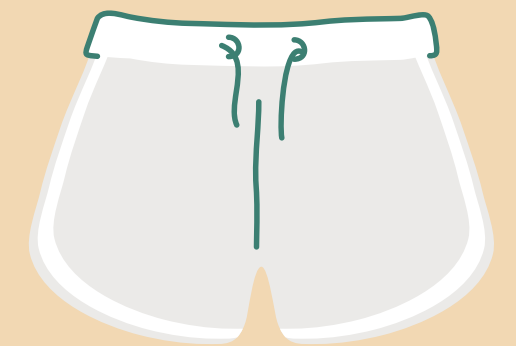
**Outreach &
Engagement**



**Reproductive
Health &
Libraries**



**Telling the
Library's
Story**



**What WiLS
Does**

<https://www.wils.org/ww-shorts/>

PRO BONO WORK

WiLS staff members are encouraged to spend a small amount of their time on pro bono projects – projects that do not recover costs but do give back to the member community. This allows us to pursue our own passion projects and grow our own experience while benefiting members and deepening partner relationships.

In 2022, here are some of the partners and projects we worked with in this capacity:

IArtLibraries

Volunteer Center
of Washington
County

Wisconsin Library
Association

Madison LGBTQ+
Archive
Committee

Metropolitan
Library Service
Agency

Community for
Open Wisconsin

Oconomowoc
High School
Theater Archive

Chippewa
Valley Technical
College





LOOKING AHEAD

WILS 5-YEAR STRATEGIC PLAN

Strengthening & Building Community

WiLS supports members by creating engaging opportunities that strengthen collaborations and strategic partnerships that are viewed by our community as vital and essential.

Fueling Innovation

WiLS helps our members, our profession, and our own organization continuously seek out new ideas and ways of doing things more efficiently and cost-effectively.

Supporting Organizational Health & Sustainability

WiLS is invested in the long-term health and sustainability of our member community and our organization. WiLS designs services that strengthen staff and boards, build capacity, and ensure continuity of operations.

CONNECT WITH US



<https://wils.org>



information@wils.org



608-218-4480

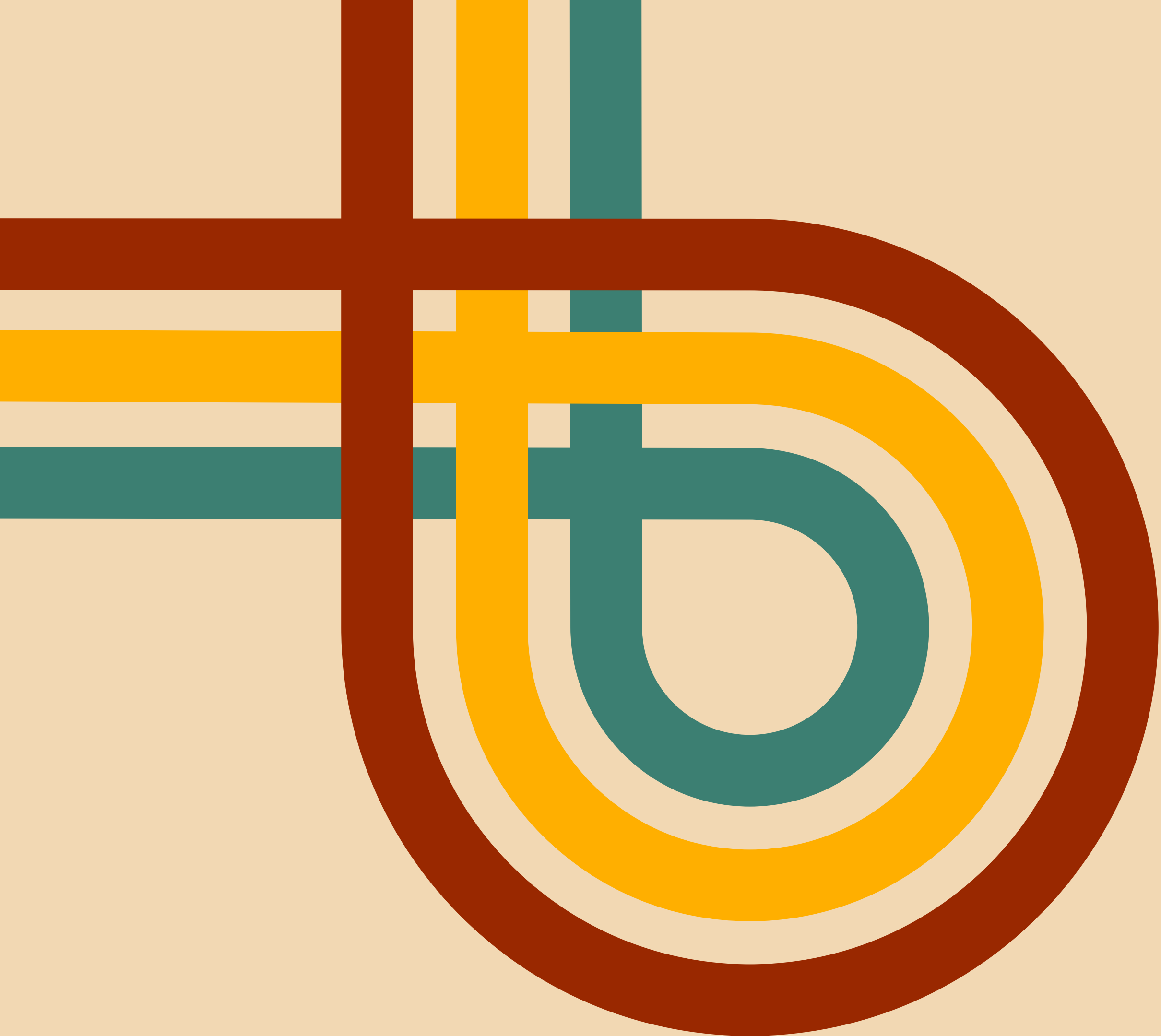


[@wils.org](#)



THANK YOU!





The
End